

water to thrive
BUILD WELLS CHANGE LIVES

PROGRESS REPORT 2012



A word from W2T

In this second progress report for Water to Thrive, we hope to give you a glimpse of the phenomenal, blessed journey of the last four years – blessed by thousands of W2T supporters who have had the heart to make a difference, transforming the lives of thousands of rural Africans who struggle every day for a clean drink of water. It has been a privilege for Water to Thrive to participate with so many passionate and caring supporters, who never cease to amaze us with their creativity and their commitment to our mission of bringing the blessing of clean, sustainable water to those in need. The results you see here are not possible without your commitment to our mission.

A major highlight of the year continues to be our trips to the field, visiting both communities in need of water as well as communities that are celebrating the blessing of clean water for the first time in their history. It is always a time of tremendous shared gratitude and thankfulness for God’s gifts. We added a new trip this year, allowing volunteers to work alongside the community members and our implementing partners to finish their well. It was such a success with everyone that we will continue to organize these special experiences for our supporters.

Our supporters continue to bless us with the resources to build capacity to serve more people in need of clean water. The following major items are just a few of the examples of steps we’ve taken to expand our mission:

- The addition of two full-time staff members, Mary Clare Rodriguez and Jill Hokanson, whose work allows us to better support our projects and donors.
- The launch of a new website that supports personalized fundraising campaigns for our donors and tracks our funded projects in Google Maps.
- The extension of our geographic reach for our projects to more countries in East Africa. Already we have projects underway in Tanzania and possibilities emerging in Uganda, both with rural populations in great need of clean water.

We are grateful for the thousands of incredible, committed volunteers who commit their time and talents in so many ways to help us deliver on our mission. We could never have come so far without these valued relationships, and you will continue to be incredibly important to our future.

Thank you for your support of Water to Thrive.


Dick Moeller
Founder & President



The Need

The lack of clean, sustainable water has a devastating impact on the health and economic progress of families and communities throughout rural Africa:

- Approximately two of every three persons in rural Africa have no sustainable access to clean water. In Ethiopia, more than 65 million people live in these circumstances.
- These conditions force millions of women and children to spend three to six hours every day walking and collecting and carrying filthy water for their families.
- A single jerry can, holding about five gallons of water, can weigh 40 to 60 pounds.
- Unsafe water transmits water-borne diseases in nearly 50 percent of the rural population.
- One Ethiopian child in six dies before the age of five. Fifty percent of those deaths are from dehydration and diarrhea.
- For children, especially girls, time spent gathering water reduces their chance for education, continuing the cycle of poverty.

Vision

A world where we share generously to provide health, hope, and water to all.

Mission

Water to Thrive transforms lives in rural Africa by bringing the blessing of sustainable, clean water to communities in need by connecting them to social investors, congregations, schools, and community groups with a heart to make a difference.

Values

Stewardship ♡ Transparency ♡ Impact ♡ Accountability ♡ Integrity ♡ Compassion





The Response

At Water to Thrive, we are continually amazed by the caring and open hearts of those who are moved to help us transform lives with the blessed gift of clean, sustainable water. Hundreds of congregations, schools, community groups, families, and individual sponsors have all rallied resources to meet the needs of more than 150,000 people in rural Africa who have never had access to clean, sustainable water. Now we have developed three signature programs, providing even more ways to help – our annual 5K race, Chef's Table Austin, and the Water Angels major donor group.

We love the grassroots efforts of thousands of supporters and donors coming together to help transform lives and break the cycle of poverty. Among the many events put on to raise funds for Water to Thrive have been dinners, lemonade stands, simulated walks for water, bake sales, Ethiopian dinners, and children collecting change in water bottles. Your support can come in whatever way you can imagine to lift up the need and involve others. Now your efforts can now be supported by a personalized fundraising campaign on the Water to Thrive website at watertothrive.org. Join Water to Thrive in transforming lives!



The Solution

Through our implementing partners, Water to Thrive provides clean, sustainable water to communities, primarily with three different types of projects:

- Hand-dug wells, for shallow aquifers
- Borehole wells, for deeper aquifers
- Spring protection systems, for natural springs that run 24/7

These projects are implemented at a cost of approximately \$10 per benefitting community member, and will last 20 to 25 years. The cost also includes water and sanitation training for all households in the community where the well is built.

Community involvement is a requirement of every project, with in-kind contributions of project labor as well as project governance for ongoing oversight and maintenance through a water council, comprised of at least three men and three women elected from the community.





The Joy

There is no more joyous moment in our work than when we share a community's celebration as it experiences the blessing of clean, safe, sustainable water for the first time in its history.

Imagine for a moment being greeted by hundreds of smiling joyous children, women, and men, all singing and dancing to express their gratitude and joy for something as basic as water.

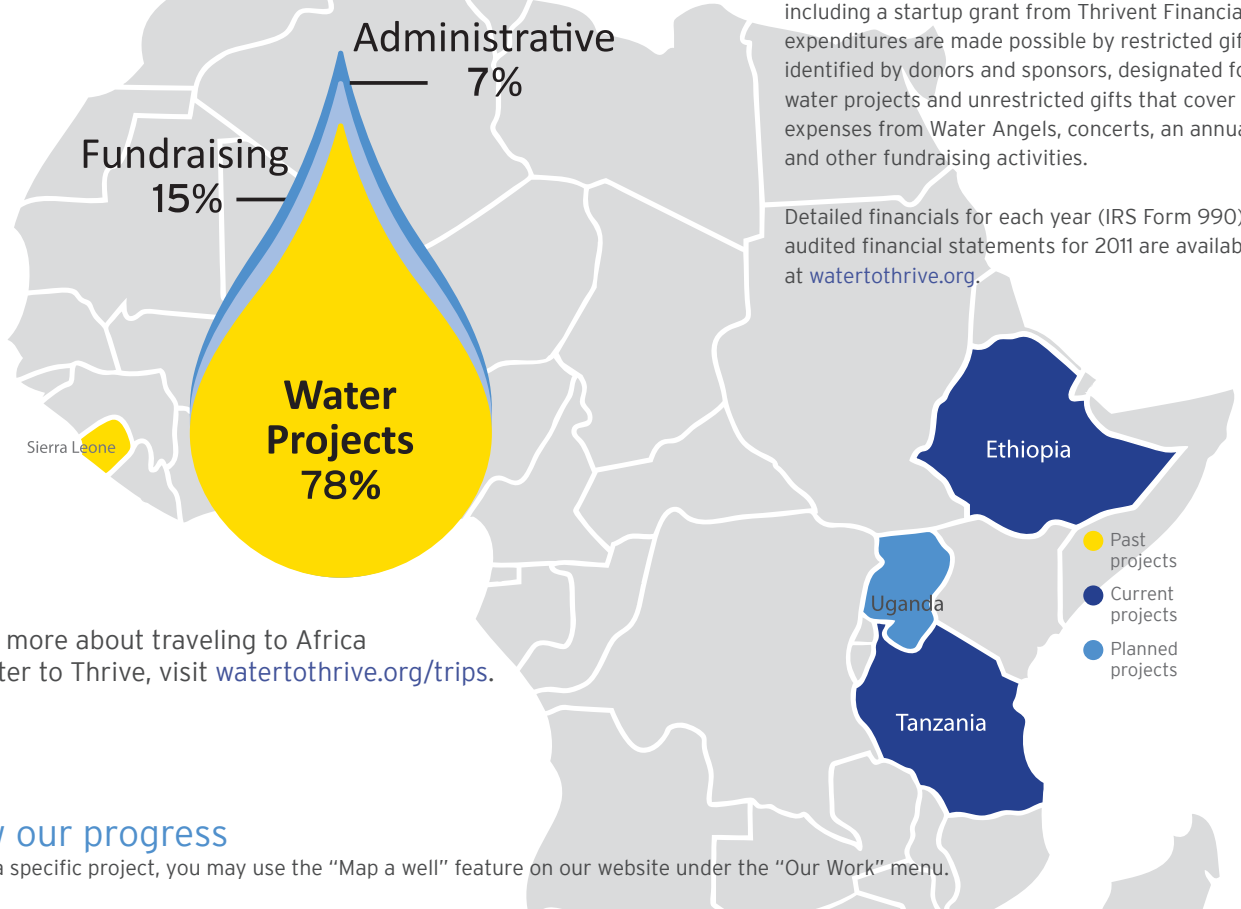
Just as our project sponsors come with a sharing heart, so do the benefitting communities. We are welcomed by the sharing of whatever is available. It might be something as simple as fresh corn from a village field, honey from nearby hives, baked ambasha bread from a local oven, all given openly and freely with true thankfulness to honor those who have made their lives healthier and safer.

These moments are forever with us, motivating us to become better advocates for the people who haven't yet experienced the sheer joy of drinking cool, clean, safe water.



Total contributions through 2011

\$1,449,145*



To learn more about traveling to Africa with Water to Thrive, visit watertothrive.org/trips.

Follow our progress

To locate a specific project, you may use the "Map a well" feature on our website under the "Our Work" menu.

Region/Country	Project Area	Implementing Partner	Year	Community Beneficiaries	Water Points
Tigray, Ethiopia	Adwa	REST	2008	5,000	12
Kelem, Ethiopia	Aleku Degrome	AGOH	2008	2,200	10
Kafa, Ethiopia	Bonga Zuria	AGOH	2008/2009	4,000	5
Kelem, Ethiopia	Dale Sadi/Lalo Kile	AGOH	2008/2009	4,700	16
Oromia, Ethiopia	Gadamba	AGOH/OSHO	2009/2010	15,000	11
Kelem, Ethiopia	Meta Tabor	AGOH	2009	6,000	10
Kelem, Ethiopia	Sudi	AGOH	2009	1,200	1
Kelem, Ethiopia	Kelem	AGOH	2009/2011	3,700	8
Danno, Ethiopia	Central Gibe	MY-DASSC	2009/2010	16,575	10
Sierra Leone	Freetown/SL	ELC-SL	2010/2011	5,700	10
Amhara, Ethiopia	Gondar	AGOH/ORDA	2010	3,140	10
Tigray, Ethiopia	Axum	AGOH/REST	2010	2,450	7
Oromia, Ethiopia	Sebata Hawas	AGOH/OSHO	2010	4,390	10
Tigray, Ethiopia	Senale	AGOH/REST	2010/2011	2,800	12
Tigray, Ethiopia	Gule	AGOH/REST	2010/2011	1,330	7
Amhara, Ethiopia	Degola Chinchaye	AGOH/ORDA	2010/2011	3,300	13
Danno, Ethiopia	Central Gibe	MY-DASSC	2010/2011	12,700	10
Amhara, Ethiopia	Robit	AGOH/ORDA	2010/2012	7,000	9
Tigray, Ethiopia	Seglaman	REST	2011/2012	9,420	44
Tigray, Ethiopia	Senale	REST	2011/2012	7,081	27
Oromia, Ethiopia	Abichu & Gena	ODA	2012	5,120	22
Oromia, Ethiopia	Barack	ODA	2012	1,106	3
Tanzania	Lundamatwe	SPP	2012	2,500	5

W2T staff

- Dick Moeller, Founder
- Jill Hokanson, Project Manager
- Mary Clare Rodriguez, Project Manager
- Peg Meyer, Outreach Coordinator (Dallas, TX)
- Kellie Shellaby, Office Manager
- Kari Hughes, Administrative Assistant

Board of Directors

- Dick Moeller, President
- Ed Scharlau, Treasurer
- Eric Schmidhauser, Secretary
- Jim Sorensen
- Carol Kaemmerer
- Lynne Dobson



P.O. Box 26747, Austin, Texas 78755

512.206.4495

team@watertothrive.org

watertothrive.org



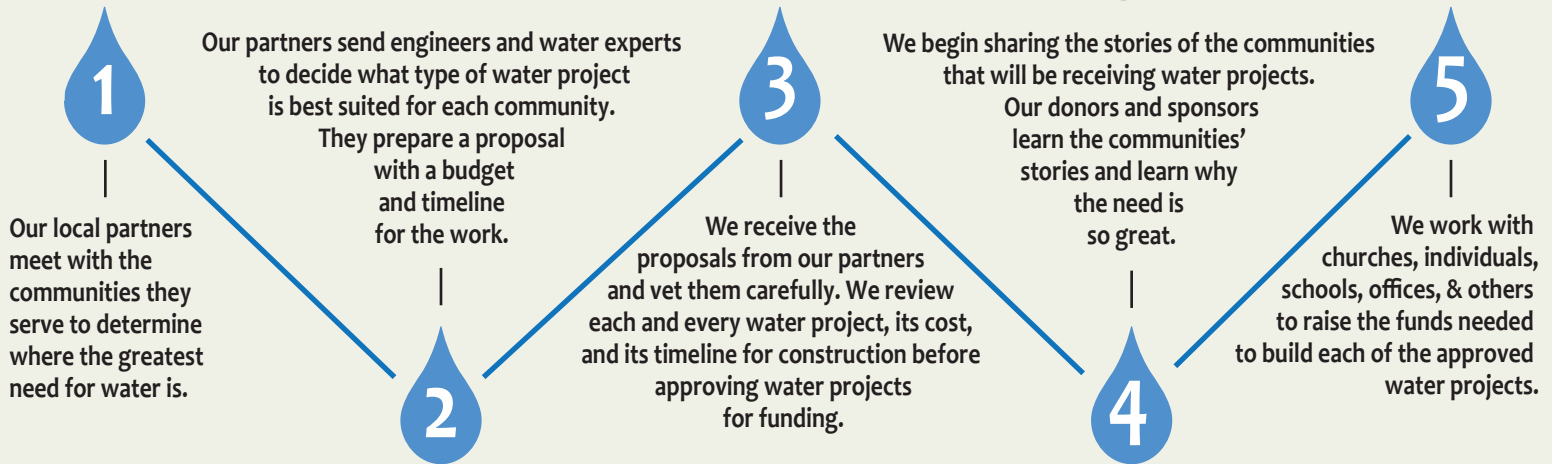
www.facebook.com/WaterToThrive



www.twitter.com/WaterToThrive

Typical Water Project Timeline

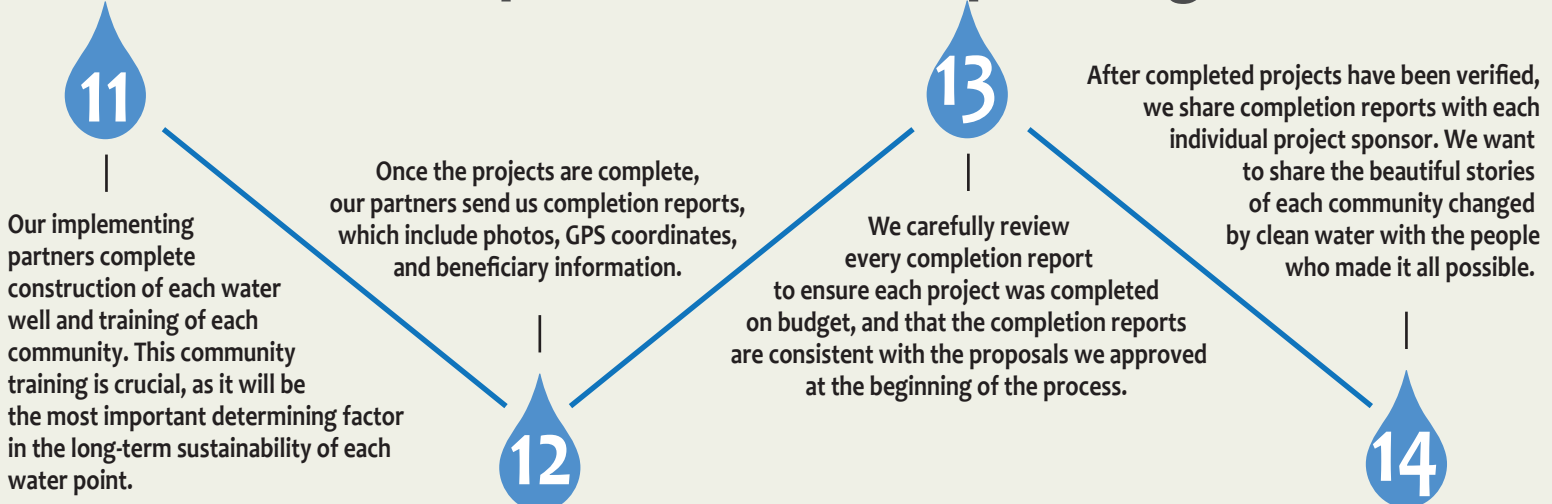
Proposals and Funding



Implementation



Completion and Reporting





Start a campaign

Are you ready to join Water to Thrive in our quest to provide safe, clean water to people who need it? Build an online fundraising campaign to work toward funding a well!

To sponsor a full water project, your campaign needs to raise \$5,000. We encourage full project sponsorship because you receive photos and information about the location of the project and the number of people served, and a sign at your water point. Plus 100 percent of your gift goes directly to the project.

When you start an online campaign, you have up to six months to reach your fundraising goal. When you set up a campaign, your family, friends, school, and congregation can contribute to your project or set up sub-campaigns to support your effort.

Get your campaign started at watertothrive.org/launch-a-campaign

Find a campaign or project

Whether you want to locate a specific water project or see the vast scope of Water to Thrive's impact in Africa, our website gives you the tools you need.

See what fundraising campaigns are currently under way at watertothrive.org/browse-campaigns

Map communities and specific wells at watertothrive.org/projects_map



P.O. Box 26747, Austin, Texas 78755
512.206.4495 team@watertothrive.org

